

EZPZ TRADING

*Simplifying the Future of Real-Time Trading
Institutional Analytics*

Table of Contents

1. Executive Summary: The Mission to Level the Field
2. The Problem: Moving Faster than the Big Institutions
3. Technical Pillar I: The High-Performance Core
4. Technical Pillar II: The Journey of a Single Trade (Pipeline)
 - 4.1 Catching the Feed: Professional Data Ingestion
 - 4.2 Thinking in Real-Time: The Sentiment Logic
 - 4.3 Lightning Storage: Redis Acceleration
 - 4.4 Instant Updates: WebSocket Broadcasting
5. The Platform Modules (Simple Functional Deep-Dive)
 - 5.1 Live Options Flow: Tracking the Institutional Heat
 - 5.2 Market Wave: Visualizing the Market Tide
 - 5.3 Net Flow: The High-Level Bias Gauge
 - 5.4 ODTE Pulse: Navigating High-Speed Volatility
 - 5.5 DEX & GEX: Market Maker X-Ray Vision
6. Indicators & Alerts: The Professional Toolkit
7. Business Systems: Automating Success
 - 7.1 Automated Payments: The Stripe Integration
 - 7.2 Education Portals: The Integrated LMS
 - 7.3 Real-Time Community: Live Chat & Support
8. Operational Excellence: The Administrative Toolkit
9. Scaling for the Future: AWS Cloud Infrastructure

1. Executive Summary: Leveling the Playing Field

EZPZ Trading is more than just a website; it is a high-performance engine designed to level the playing field in the complex world of stock market options. For years, big institutional banks and hedge funds held a massive advantage over ordinary traders because they had access to faster, more detailed data.

ITECHNOLABS was brought in to change that. We built a platform that takes the 'firehose' of raw trade data direct from the exchanges and processes it in less than a second. This enables everyday traders to see exactly what the big institutions are doing, when they are doing it, and with what level of conviction. This case study shows how we turned a complex technical challenge into a simple, powerful tool for traders.

PROJECT GOAL	Democratize Institutional Market Data
LATENCY ACHIEVEMENT	Sub-ms End-to-End Processing
DAILY VOLUME	10 Million+ Real-Time Messages
BUSINESS RESULT	100% Automated Subscription Lifecycle



2. The Problem: Information Asymmetry

The biggest problem for regular traders is 'Information Lag'. By the time most retail platforms show a trade, the big institutions have already moved on. Standard tools show you 'that' a trade happened, but they don't show you 'who' did it or 'why'.

Institutional traders use 'Sweeps'—splitting a huge order into 16 smaller ones to hide their intent. We solved this by building custom listeners that catch these fragments and stitch them back together in real-time, labeling them with a simple 'Sentiment' (Bullish or Bearish) so users know exactly what is happening.

KEY INSIGHT: Retail traders fail because of the data gap. We closed that gap permanently.

3. Technical Pillar I: The High-Performance Core

To build a system this fast, we couldn't use normal web technologies alone. We had to architect a hybrid system that separates the 'Business' from the 'Data'. This ensures the site stays fast even when the stock market is going crazy.

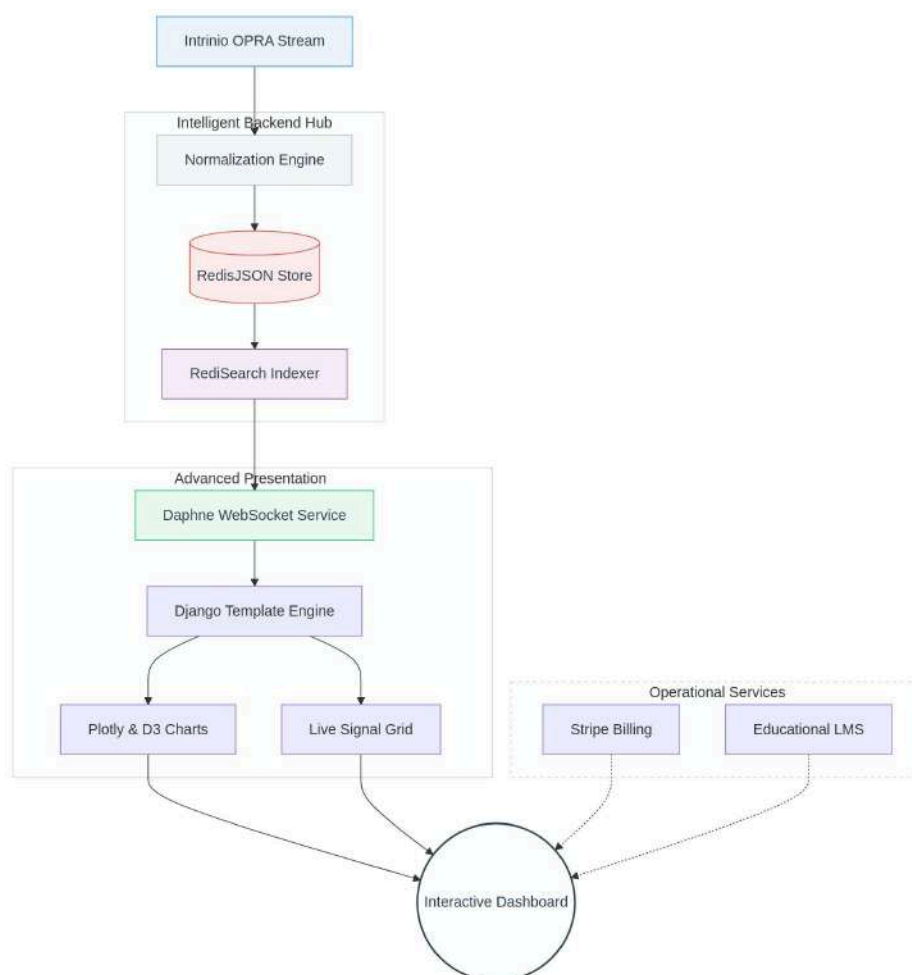
TECHNOLOGY LAYER	OUR CHOICE	THE BENEFIT
CORE PLATFORM	Django (High-Speed Python Framework)	Handles secure user logins, membership plans, and the overall business infrastructure.
THE PULSE	Django Channels & Daphne	This is the 'heart' that beams live trade updates to thousands of users simultaneously without any lag.
THE VAULT	RedisJSON & RediSearch	Instead of a slow traditional database, we use this lightning-fast 'memory storage' to keep track of every trade.
THE DATA SOURCE	Intrinio OPRA Stream	We migrated from Polygon to this dedicated professional feed to get every exchange 'qualifier' and trade detail.
THE CLOUD	AWS Elastic Beanstalk	Ensures the site stays online 24/7. It automatically grows (scales) to handle more traffic during busy trading hours.
FINANCIALS	Stripe Automation	A fully automated system for subscriptions—handling payments, cancellations, and

		membership upgrades automatically.
--	--	------------------------------------

4. Technical Pillar II: The Journey of a Single Trade

How do we move data from the exchange to your screen in half an eye-blink? It happens in four extremely fast stages:

- **Stage 1: Ingestion:** We listen to the dedicated Intrinio OPRA stream across 16 threads.
- **Stage 2: Logic:** Our algorithms analyze the trade price relative to the current spread.
- **Stage 3: Storage:** The trade is instantly indexed in a massive Redis In-Memory cluster.
- **Stage 4: Broadcasting:** We beam the update to thousands of browsers via WebSockets simultaneously.



5. The Platform Modules: Powerful Tools Made Simple

Every module on the platform was designed with one goal: To make complex data easy to see.

5.1 Live Options Flow

The Live Options Flow is the star of the platform. It shows every single contract traded on the US markets in real-time. But we don't just show numbers; our system analyzes every trade. If a trade happens at the 'Ask' price, it means the buyer was aggressive (Bullish). If it hits the 'Bid', it means someone was selling quickly (Bearish). We even highlight 'Golden Sweeps'—trades worth over \$1 million—to show where the real power is moving.

The screenshot displays the 'Live Flow' interface. At the top, there's a search bar and buttons for 'Join Free' and 'Login'. Below the search bar, a message states: 'This data is 30 min delayed. Only the following tickers are available for non-subscribers: SPY, IWM, INTC, IWM. To access live updates and real-time data, click here to join FREE!' and a 'Sign Up' button. The main area features a table with the following columns: TIME, TICKER, SIDE, STRIKE, C/P, EXPIRATION, DTE, BID-ASK, SPOT, STOCK, SIZE, PREMIUM, VOLUME, OTM(%), DIRECTION, and TV. The table contains 13 rows of trade data.

TIME	TICKER	SIDE	STRIKE	C/P	EXPIRATION	DTE	BID-ASK	SPOT	STOCK	SIZE	PREMIUM	VOLUME	OTM(%)	DIRECTION	TV
4/25/2026, 12:55 AM	IWM	ASK	270	PUT	2026-05-08	18d	\$2.47 - \$2.5	\$2.5	\$278.7	141				BEARISH	
4/25/2026, 12:55 AM	INTC	ASK	100	PUT	2026-05-01	4d	\$17.5 - \$18.049	\$17.86	\$82.54	20				BEARISH	
4/25/2026, 12:55 AM	SPY	BID	725	PUT	2026-07-17	81d	\$24.78 - \$24.808	\$24.78	\$713.97	31				BULLISH	
4/25/2026, 12:57 AM	INTC	BID	80	CALL	2026-05-01	4d	\$5.109 - \$5.25	\$5.169	\$82.57	258				BEARISH	
4/25/2026, 12:55 AM	SPY	BID	605	CALL	2026-05-15	18d	\$10.82 - \$10.819	\$10.82	\$714.03	5				BEARISH	
4/25/2026, 12:55 AM	INTC	ASK	65	CALL	2026-05-15	18d	\$18.049 - \$18.35	\$18.35	\$82.56	485				BULLISH	
4/25/2026, 12:55 AM	SPY	BID	710	CALL	2026-05-05	8d	\$10.22 - \$10.27	\$10.229	\$714.02	20				BEARISH	
4/25/2026, 12:55 AM	SPY	ASK	705	CALL	2026-05-01	4d	\$12.579 - \$12.63	\$12.63	\$714.02	84				BULLISH	
4/25/2026, 12:55 AM	SPY	ASK	705	CALL	2026-05-01	4d	\$12.579 - \$12.63	\$12.63	\$714.02	25				BULLISH	
4/25/2026, 12:54 AM	SPY	ASK	705	PUT	2026-05-18	52d	\$13.369 - \$13.409	\$13.39	\$713.98	21				BEARISH	
4/25/2026, 12:54 AM	SPY	BID	705	PUT	2026-05-18	52d	\$13.38 - \$13.42	\$13.39	\$713.98	29				BULLISH	
4/25/2026, 12:54 AM	SPY	ASK	700	PUT	2026-05-15	18d	\$5.009 - \$5.029	\$5.94	\$713.98	50				BEARISH	

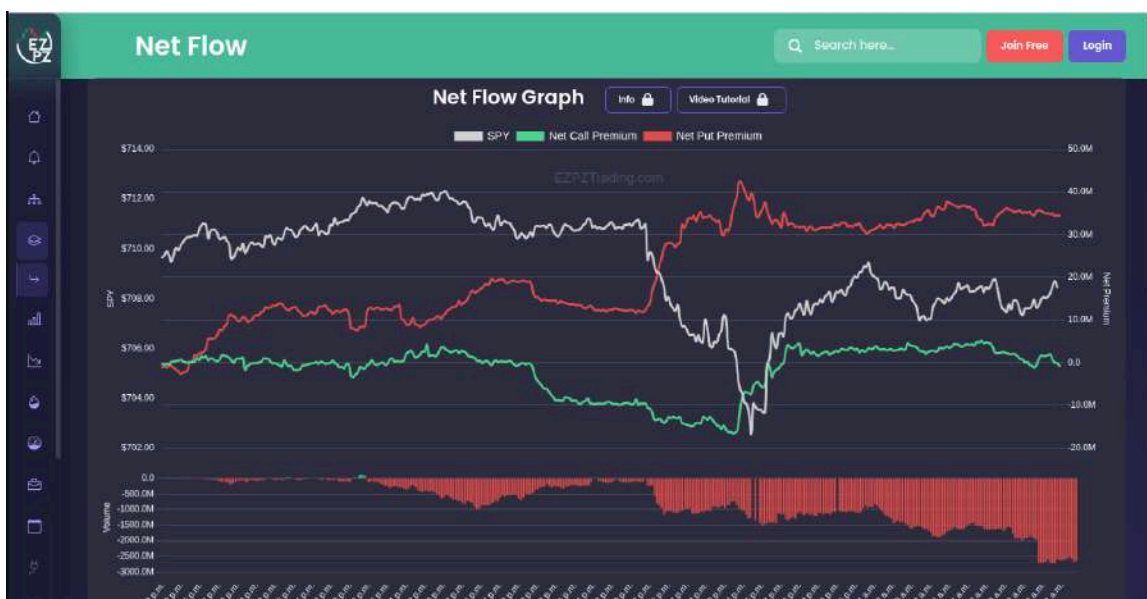
5.2 Market Wave Graph

Big data can be confusing, so we created the Market Wave Graph to simplify it. It takes all the thousands of trades and turns them into a smooth, colorful wave. When the wave is rising, it shows that call options (buying) are dominating. When it falls, puts (selling) are taking over. It's the simplest way for a trader to see the overall 'tide' of the market without reading a million rows of data.



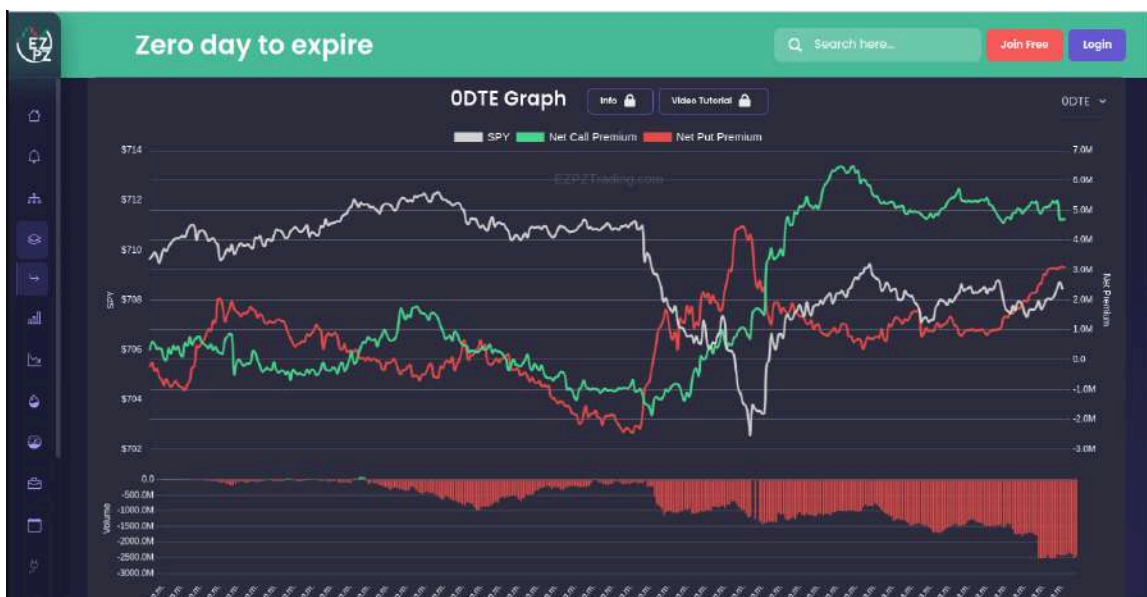
5.3 Net Flow Analytics

Net Flow focuses on the 'Total Bias'. It asks: Is more money moving into calls or puts right now? It aggregates millions of trades into a single line chart, showing which side is winning the battle.



5.4 ODTE Pulse

Many modern traders focus on 'ODTE' (Zero Days to Expiration) contracts because they are fast and volatile. Our system has a dedicated 'ODTE Pulse' that isolates only these contracts. It tracks the mathematics behind how big banks must 'hedge' their positions, creating predictable price levels where the market is likely to bounce or break out.



5.5 DEX & GEX Exposure

To see what's happening behind the scenes, we built the DEX and GEX Exposure charts. These show exactly where the big 'Market Makers' are positioned. By mathematically modeling these positions, the platform can predict 'Support Floors' and 'Resistance Ceilings' that don't appear on a normal price chart. It's like having X-ray vision for the stock market.

- GEX Floors: Identifying price targets where the market stops falling.
- DEX Ceilings: Predicting levels where the market will face resistance.



6. Indicators & Alerts: The Trader's Tactical Radio

To help traders take action, we built an 'Alert System' that pings users when institutional trades reach certain thresholds. This includes our 'Proprietary Indicators' that draw signals directly on charts for the user.

- **Indicator:** Master Scalper: For fast, intraday profit targets.
- **Analysis:** ShortEx Analytics: Detecting when stocks are being heavily shorted.
- **Alert:** Golden Sweeps: High-conviction multi-million dollar institutional orders.

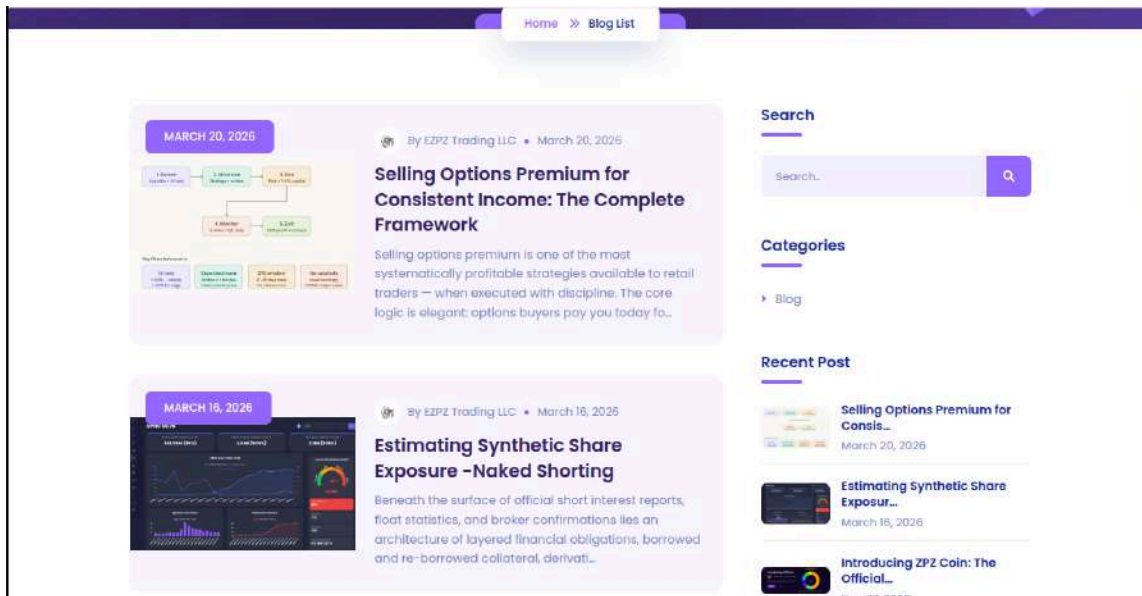
7. Business Systems: Automating Success

7.1 Automated Payments via Stripe

The business owner never has to worry about billing. We built a 'State Machine' that interacts with Stripe. If a payment fails, the system automatically emails the user and restricts access. If they upgrade, it grants new features instantly. It's a 100% hands-off business model.

7.2 Education Portals & LMS

A successful trader needs a community. We built a custom real-time Chat module where users can share ideas and follow expert alerts. Along with this, we built a full 'LMS' (Learning Management System) so the owner can upload educational videos, helping new users learn how to use the high-tech tools provided.



8. Operational Excellence: The Mastery Toolkit

For the managers of EZZPZ Trading, we built a suite of custom 'Power Tools' to make running the site easy. These CLI (Command Line Interface) tools automate the hard stuff.

TOOL NAME	PURPOSE & BUSINESS VALUE
User Sync Tool	Automatically keeps the Stripe payment status in sync with the user's dashboard access.
Data Cleaner	A daily routine that keeps the high-speed Redis storage clean and fast for the next trading day.
Backup Master	Automated snapshots of every user profile and trade history for total security and recovery.
Bulk Mailer	A custom tool for the owner to send updates and trading alerts to the entire community at once.

9. Scaling for the Future: AWS Cloud Infrastructure

We host everything on AWS Elastic Beanstalk. This means if 100,000 new users join tomorrow, the system will automatically create more server space to accommodate them. We tuned the servers specifically to handle 'High Concurrency'—basically, the ability for thousands of people to talk to our server at the exact same millisecond.

